



The Parish Pump

The Croxley Green Parish Council's House Magazine

Spring/Summer 2014

Inside this issue:

Letter from the Chairman	1
Council Updates - Budget 2014/15	8—9
Annual Reports	10—11
Events — Dates for Your Diary	15
Senior Citizen's Outing Draw Form	16

The views expressed in this publication are not necessarily the views or policy of the Parish Council.

COUNCILLORS

North Ward:

Nik Bennett	773623
(Vice Chairman—P&D Committee)	
Frank Brand	248704
Julie Isard-Brown	711107
Hazel Seeley	772696
(Vice Chairman—E&A Committee)	
Wendy Shafe	441638
(Vice Chairman of the Council)	

Croxley Green Ward:

Kenneth Baldwin	225460
Leighton Dann	778484
Dudley Edmunds	721214
(Chairman—E&A Committee)	
Peter Getkahn	464606
Wendy Jordan	777880
(Chairman—P&D Committee)	
Janet Martin	774514

South Ward:

Phil Brading	492893
Chris Mitchell	775642
(Chairman of the Council)	
Robert Ridley	778638
Anthony Vane	243068
David Wynne-Jones	251905

Letter from the Chairman

Hello to all of you,

We are now in my favourite time of year. With the trees out fully, the sun high in the sky and a summer ahead of us. It seems hard to believe the terribly wet weather we had earlier this year.

One issue that has come out of this year was the rather concerning decision by the Inspector who has ruled on the TRDC Site Allocations Local Development Document. Our understanding is that the Inspector has recommended that the "horse field" at the bottom end of Baldwins Lane, and part of Killingdon Farm is taken out of the Green Belt. The Baldwins Lane site is the one where Hertfordshire County Council wants to see a secondary school built. There has been great opposition to this during the consultation period in 2012 for the plan. One objection is that it is Green Belt provides a natural green boundary to Watford. Also, other issues such as traffic problems were a large concern. It was clear from our questionnaire last year that most people in Croxley Green feel that the Green Belt is extremely important. After we received advice from CPRE, (Council for the Protection of Rural

England) we lodged an objection to TRDC in their consultation.

This issue has made us more determined to carry on with the next stage of the Neighbourhood Plan process which is meant to give us more power to determine our future in Croxley Green. TRDC have approved the area we will develop the plan for as the whole of the Parish. That is the second main step after the questionnaire last year. We do need some more help to develop this plan, so if you would like to get involved please contact the Parish council office. Email info@croxleygreen-pc.gov.uk

We have now set our budget and precept for the coming year. We have a challenge in that a grant that comes to us from the Central Government via TRDC is reducing. The precept will increase by 2.4%, which means an increase from £46.52 this year to £47.62, an increase of £1.10 for the whole year on a Band D equivalent house. I do believe we should keep up the services we provide and the support we give to organisations to help keep Croxley Green special. With this small increase we believe we can do that.

We do a lot to help keep Croxley Green special, and this includes, PCSO's to help keep a feeling of security, Community Bus for the elderly, annual seaside trip for the elderly and we put money into the improvement of the Baldwins Lane playground, and will add more equipment next year.

We also support through various means many events, including the Dog Show, New Year's Eve Fireworks, the Wassail, Revels, Croxfest and the New Christmas tree at the Library.

These are all things that are free to join in with, and are open for all. These are the things that contribute towards Croxley Green being a community rather than just a dormitory village.

I welcome our new senior ranger, Philip Hinton, who started at the beginning of February.

Please look at our website to see when meetings are held and do come to them if there is anything that interests you. Also all councillors are delighted to hear from you, so feel free to contact us.

Best wishes

Cllr Chris Mitchell

YORK HOUSE SCHOOL

Co-educational Preparatory Day School | 3 to 13 years



Your local outstanding Prep School
for boys and girls from 3 to 13 years...

With excellent facilities throughout,
York House sits in 47 acres of
beautiful Hertfordshire countryside.

Contact the School Office on 01923 772395 to arrange
a time to experience York House for yourself.



Bursaries available: IAPS School

Administered by Charitable Trust No. 311076

www.york-house.com

YORK HOUSE SCHOOL

Sarratt Road, Rickmansworth, Hertfordshire, WD3 4LW

Tel: 01923 772395 | Email: yhsoffice@york-house.com



Do you need a Helping Hand?

If you are looking for an **alternative to residential care** or extra support for those everyday tasks that are becoming difficult for you or a loved one – then we're here to help - **from 30 minutes per week to Live-in Care.**

Our **Croxley Green care team** has been providing award winning quality homecare since 1989 and can help with: personal care, housekeeping, help getting around or even to provide a break to an existing family member or care-giver.



To find out how we can help you,
call: 01727 701 461 or
visit: www.helpinghands.co.uk

Environment Matters

Wearing my Environment & Amenity hat I thought I would look at International, national and local items that concern Croxley Green and where we, as residents, can make a difference.

On an international basis let us talk about lamp-posts. Not the new ones in Dickinson Square that are causing so many issues (although we will come back to those) but all our lamp-posts about which there seems to be some controversy as to the times that they should be on.

Light pollution is a very serious issue in the UK. It is the reason we cannot see the night sky clearly (or at all), it is a major cause of sleep deprivation and it is playing havoc with the wildlife. There were cries of outrage in some quarters when HCC decided to cut back the hours that the lights were on, but why? The police across the country tell us that there is no increase in crime with the lights off and Croxley is a low crime area anyway. So, what is the issue? Are we afraid that with the lights off Croxley will be invaded by villains and thugs, do we still have a lurking fear of things that go "bump in the night" or is it simply that an increasing urban tendency means that we cannot live without 24 hour lighting? I go to Dartmoor whenever I can (and it is never enough) and stay where there are no street lights at all, just the lights from the occasional house. I can look up and see the night sky, hear the nocturnal animals and I certainly don't feel worried I am going to bump into ghoul or villain!

So, please support the lights out, let our wildlife have a proper life, let people sleep and let everyone enjoy the wonders of the night sky. What is the international aspect? Well save energy and reduce global warming. Buy a torch and help save the World!

Now back to those rather bright new street lamps. It is interesting that when one person complained about the All Saints' bell a TRDC officer was sent hot-foot to

investigate the "noise" pollution. However, although people have been complaining about sleep deprivation (just as important in the WHO analysis) it took quite some time for the Council to react and why was there no immediate abatement order served on HCC? However, the issue now seems to be sorted out and the lights look very good within the Dickinson Square setting.

The Green Belt was established to keep urban sprawl from encroaching on rural and semi-rural communities and it has done a pretty good job of doing so. However, now it is being squeezed by the endless "demand" for more houses etc. This demand is driven by the fact that we are living longer, more families are breaking up thus needing more accommodation and we are having more people to come and stay in our green and pleasant land. The CPRE did some analysis a little while ago and decided that there is enough "brown-field" sites to more than cope for the housing demand without cutting in to "green-field sites" and certainly not the Green Belt. But, up and down the country more and more Green Belt is being chipped away and we are losing the safeguard to urban sprawl. However, there does seem to be some confusion. Our local authorities tell us that it has absolutely no choice other than to accept the inspectors "recommendations" whereas central government tell us it is certainly in the power of local communities to decide where and how they build. It is, of course, not a simple matter and both government and Local Authority messages are both correct and incorrect and often, somewhat disingenuous. However, if you don't want your Green Belt to go complain loudly and strongly to your local councillors, your county councillors, your MP and to central government: do let your voice be heard!

As many people know, my hobby is training and working sheep dogs. I also help one or two rescue organisations in their task of re-

homing dogs (I only do dogs and concentrate of Border Collies). Dogs are very popular in Croxley Green and the surrounding area and there seems to be more and more new dogs on the block. I am pleased to say that by far the majority of local dog owners are highly responsible but there are a few who don't clean up after their dogs. The Parish Council provides bins and bags so please, everyone who has a dog, use them.

Especially at this time of year please keep your dog on a lead if going through a field where there are lambs and always ensure your dog is under control when there is livestock about (and this includes horses). Equally, parents, please remember that the cuddly lamb or calf your youngster is running up to may well have a very protective mum close by.

Spring is here so do get out and enjoy our countryside and take time just to stop and listen and really see and hear.

Cllr Dudley Edmunds

Blue Badges

I have been the holder of a Blue Badge (Disabled Parking Badge) for about two or three years now and have noticed how much these car parking spaces are abused by seemingly fit men and women.

When questioned as to why they do so, answers range from 'I'm only going to be a minute' to instructions to go away and do something physically impossible to oneself.

These car parking spaces are made wider to make it easier for wheelchair users or those who have difficulty in getting in and out of cars. Nobody applies for a Blue Badge for fun, quite the reverse. So please however tempted, avoid using a disabled space!

Cllr Hazel Seeley

Dog Waste Bags

For those dog owners who have forgotten or were unaware, bio-degradable dog waste bags are **free** from the Parish Council Offices and we also supply them to the library. Please use them, and the bins around Croxley, to help keep our pavements, footpaths and open spaces clean and free from mess.

Please don't forget to use the **RED waste bins.**



Public Toilets

Do you know that the Fox and Hounds, New Road and The Harvester, Watford Road have public toilet facilities?

CHIROPODIST PODIATRIST

- Cracked Heels
- Callus
- Corns
- Nail Conditions
- Ingrown Nails
- Thickened Nails
- Fungal Infections
- Athlete's Foot
- Verrucae
- Diabetic Footcare

Advise and Care on all Foot Problems

Clean Sterile Environment

Recognised by Insurance Companies

Long Established Practitioner

Free On-Site Parking

Ground Floor Access

BY APPOINTMENT ONLY

hpcp
registered

Mary Devine
Devine Feet Limited
43, Beechcroft Avenue,
Croxley Green, WD3 3EG

01923 25 16 25
www.devinefeet.co.uk

To us, it's personal.

Looking for rewarding part time work?

We are looking for caring people to look after the elderly in their own homes within Watford and the surrounding areas.

Empathy is more important than experience and we welcome applicants of all ages, however a car is essential.

We offer excellent training, flexible hours, a competitive rate of pay, and the ability to make a real difference for our clients.

For more information, please call Sharon on 01923 250513.
Or visit our website on www.homeinstead.co.uk/watford.

New Road Service Station

50 New Road, Croxley Green, WD3 3EP
Tel: 01923 776104 & 775144
Fax: 01923 443446
Website: www.newroadservicestation.co.uk

In house services:

- ✓ MOT (Cars and Motorcycles)
- ✓ Air Conditioning Service and Repair
- ✓ Bosch Diagnostic Service for Petrol and Diesel
- ✓ Laser 4 Wheel Alignment
- ✓ Servicing to all makes of vehicles (including those still under manufacturers warranty)
- ✓ Full Body Shop Facilities
- ✓ Courtesy Car available by arrangement
- ✓ Attended Petrol and Diesel Forecourt
- ✓ Local Breakdown Service

We are Hair... for you

We are Hair...for you

Unisex Hair Salon
299 Baldwins Lane
Tel: 01923 711478

Flowers 4 Croxley

The pansies planted in the autumn miraculously survived the rain, wind and storms which plagued the country during January and February. As I write they are looking fantastic. The daffodils which were planted by school children six years ago as one of our first ventures have looked great.

We are having our own stall at the Revels again this year and maybe repeat our success of last year when we won the cup for Best Stall.

We are re-introducing the Garden Competition this year and hope that lots of you will enter. This is not a cut throat competition by any stretch the imagination but something we can all enjoy. We are lucky that the competition is being sponsored by Garden Scene in Chipperfield where we buy our plants from and Greenman Garden Services. Chris Greenman is a member of our Committee. His input and help has been invaluable.

Thanks to everyone on the Committee whose hard work and imagination makes it all possible.

Hazel Seeley (Chair)

Charity Dog Show

Under the auspices of the Parish Council, the annual dog show was held in Stones Orchard on 29 September 2013. The proceeds from the show would be shared between two charities, The Stroke Association (Croxtley Green) and The Lynda Jackson Macmillan Centre.

As you may know, I came to Croxtley as a rescue dog in the late spring of last year, I was a little dubious at first but I became far easier and friendly as time passed, now I am settled and love Croxtley and all my doggy friends.

There were ten classes to enter and all were fully used by a variety of dogs and their handlers. The dog show included a class for best rescue dog which of course I entered because there would not be many competitors, boy was I wrong,

the people of Croxtley have generously rescued at least 40 friends. I was overwhelmed by their kindness.

The show itself attracted dogs of all breeds; I would guess there was over a hundred dogs and their owners present on this lovely sunny afternoon. The judging was not based on Crufts standards but more on a friendly, happy day for dogs and their owners, with particular note of the children and their pets.

A list of all the recipients awarded rosettes can be found at the Parish Council offices some 50 rosettes in all.

Special thanks must go to the organisers and helpers, judges and ring attendance also the support given by Croxtley Hardware and the wonderful display by A-ZK9 services and their energetic dogs. Here's hoping for another great show this year.

Stanley

People, Pets and Peccadillos

Do you love dogs? I do, maybe because my mother used to breed dogs in our big house in Ireland when I was young. She used to take me to dog shows which involved a lot of combing and brushing for the dogs before the big event of taking them out into the ring. We used to go to Crufts each year by boat across the Irish sea – a prize at Crufts was a valuable, commercial possession as it set the gold standard on pedigree and the price asked.

When my parents used to visit me in Croxtley, my mother immediately made friends with the most important 'doggy' person in England at the time – Barbara Woodhouse – who lived just off the Green. Mrs Woodhouse was a formidable lady who had learned how to train dogs in the Argentine – her trademark command was 'Walkies'. Dog owners came from all over England to have their dogs trained in obedience classes, she was on television too.

Walking on Croxtley Common Moor

as I do a lot on my own, I am often asked 'Where is your dog?' There are friendly dog walkers everywhere but they all look at their four legged friends in a very different way. Only a few dogs are pedigree breeds these days, many have come from 'rescue' homes and quite a few are thirteen, fourteen or even older which was unknown when I was young. In those days when I was a boy, they normally lived to eight or nine. Foxhounds and greyhounds were put to sleep at the age of eight because they could no longer perform.

My 'doggy' friends in Croxtley expect their dogs to live as long as possible these days. This is not cheap, and quite a few have spent hundreds of pounds on veterinary bills and even take out expensive insurance. A visit to the vet today is an elaborate procedure, even with a young healthy dog – seldom do you leave with change from fifty pounds. It is far more difficult to become a vet today than a doctor – the competition for training is enormous, the rewards are huge.

Quite often healthy looking walkers who I meet in our country lanes disappear from the face of the earth. Have they moved to another area? No! – it is because their dog has died. When I meet them in some shop months later they announce that they have given up walking because they are alone. When I suggest they get another replacement they look horrified. One person told me that a new dog would probably be alive when he had died and he couldn't stand the thought of that.

As we all live longer we all need trustworthy companions and the loyal, happily dependent look of your dog's face makes the world a better place as he pants happily alongside you Croxtley is a perfect place for dog walking, doggy bags are provided free by the Parish Council. Go out and get a dog, spoil yourself, and if you have one already: get another one.

David Wynne-Jones

JUST WINDOWS & MORE!!

Over
3300
installations in
the WD
postcode
area!!

Windows
& Doors

Conservatories
& Orangeries

Luxury garden
rooms & studios!

PVCu guttering,
fascias & soffits

TGO

FENSA
Registered Company

GGF
Glazing & Glasswork

WINDYBROS
Windows & Doors
Installation & Repair

Freephone 0800 132510
www.justwindowsanddoors.com

Just Windows & Doors Ltd
8 Long Lane, Ickenham &
149 Uxbridge Road,
Rickmansworth

JUST WINDOWS
and
DOORS



ANLEX GARDEN CENTRE

We are a local business based in Northwood, Middlesex.
www.anlexgardencentre.co.uk



Visit us
for all your
gardening needs ...

We have a wide variety of plants which range from
shrubs and trees to seasonal bedding.

We also have a wide variety of gardening products which include
seeds and bulbs, propagation tools and equipment,
pest and disease control.

We have a delivery service for any larger purchases such as
bulk bags of soil, shingle and large turf orders.

Tel: 020 8421 5977 - Sandy Lane, Northwood, Middlesex, HA6 3HB



Rosemary Conley
Diet and Fitness Clubs

FitSteps®, Aerobics & Zumba classes:

**Croxley Green,
Oxhey & Watford.**

The diet is based on low fat & low Gi.

It's an enjoyable, sociable way
to get fit & lose weight.

FREE TRIAL SESSION

Free Membership (Save £10.00)

Class Fee: £6.50

Exercise only Fee: £5.00

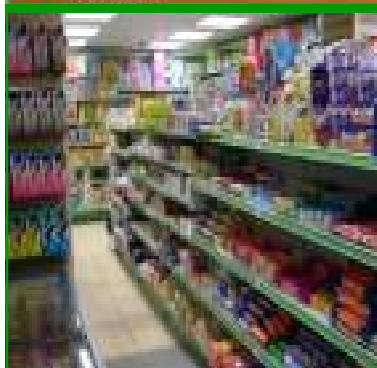
Contact Jeannette Peel

Email: jeannettepeel.rcdfc@virgin.net

Tel: 01494 871543

www.rosemaryconley.com

LONDIS Best value locally **LONDIS**



Londis
*Baldwins
Lane*



*Groceries
Fresh Meats
Frozen Food*



*Off Licence
Cash
Machine*

For all general police enquiries, advice
and non-emergencies call

101

Your Neighbourhood Officer could help!

www.herts.police.uk

**To advertise in the
Parish Pump
call**

01923 710250

**Prices start
from just £12.50**

New Senior Ranger

Originally from Stratford upon Avon, I come to Croxley Green via Oxford. After jobs working in shops and offices I realised what I actually wanted to do was work outdoors. So I put myself through college studying Countryside Management for two years. This led to a role as a Rights of Way Ranger for Warwickshire County Council, building up skills and experience over two and a half years. Due to redundancy at the Council I also have worked carrying out wildlife surveys and too long a stint in a warehouse. Finally I got back into the industry with a job at Oxford City Council on their Grounds Team.

My partner and I decided to move south as she was offered a promotion in the city with her company. This left me with an exciting opportunity to find a new challenge. Somewhere I could use my experience and knowledge accumulated over the years and put them to good use. Croxley Green I feel is this place, a community feel, a wide variety of beautiful habitats and somewhere I can contribute.

PS We are looking to set up a volunteer group to work along the canal. If anyone is interested they can contact the office.

Philip Hinton



Wassail 2014

Last year was an extremely good year for Stone's Orchard with wonderful blossom and an excellent crop of apples. Some will tell you that this was entirely due to Croxley Green's first Wassail in January 2013. Whilst I keep an open mind it will be interesting to see if there is a bumper crop this year, following our second Wassail.

The origin of Wassail is open to debate and speculation and I doubt if we will ever know for sure. Equally, there are different sorts of Wassail and all sorts of traditions attached to the ceremonies. Some Wassails are organised by folklore societies, some by pubs, some by Morris sides, some by Parish Councils and some by the local Church.

We were fortunate this year to be able to welcome Colin and Karen Cater who have written, what is surely, the definitive book on Wassail. They had, they tell me, a most enjoyable time and as Colin is a well-known folk musician they joined us in the "Shed" afterwards for a sing/play around. Colin was impressed with the organisation, the fact that we had a Morris side and our very own Mummers taking part but most of all, I think, by the number of people who had

turned out and so enthusiastically joined in. There was a wide range of ages and it was pleasing to see the number of family groups who came along and joined in so enthusiastically.

There was a collection for the PC Charities and I know that the bucket was really quite heavy by the end of the evening. We are very fortunate to have Phoenix Morris based in Rickmansworth and also to have our very own Mummers, ably assisted by a rather large Irish Wolfhound!

So what is it really all about? Well, it depends on who you are I guess. Some will be there as they are a fan of traditions and folklore, some will be there because it makes an attachment to the land and others because it is a bit of fun and a bit daft and some will be there because they believe that by awakening the Spirit of the orchard there will be a better crop this year.

For whatever reason you came along, I hope that you enjoyed yourself, that we will see you next year and that, just perhaps, we all contributed to another wonderful year in Stone's Orchard.

NB you may have read in My Croxley that Wassail cost £250 to put on. All the musicians, dancers and Mummers gave their time and talent free of charge. The cider, toast and cake was donated by residents and the Sportsman pub made no charge for the use of the Shed. The only potential charge is one made by TRDC for the use of the Orchard (particularly miserly in view of the terms of the Conveyance of the orchard to TRDC) and our good friends at the Sportsman have offered to pay this for us for which we are most grateful.

Cllr Dudley Edmunds

Finance & Administration**Agreed
Budget (£)****103****Groundworks****Agreed
Budget (£)****101 General Administration**

			4001	Salaries & Wages	51,500
			4006	Protective Clothing	340
			4008	Training	500
4001	Salaries & Wages	71,000	4010	Misc Staff Costs	720
4007	Courses / Conferences	0	4012	Water Rates	400
4008	Training	500	4017	Health & Safety	750
4009	Travel	1,300	4018	Refuse Disposal	0
4011	Rates	2,897	4036	Property Maintenance	500
4012	Water Rates	560	4037	Grounds Maintenance	2,100
4013	Rent	110	4038	Maintenance Contracts	2,000
4014	Light & Heat	2,900	4041	Equipment Hire	0
4016	Janitorial	1,400	4042	Equipment Maintenance	600
4017	Health & Safety	280			
4019	Consultancy Fees	2,700	4046	Equipment Purchased	500
4020	Misc Establishment Costs	400	4051	Vehicle License & Insurance	2,500
4021	Telephone & Fax	1,600	4055	Fuel & Oil - LS08 WCP	1,300
4023	Stationery, Printing & Postage	3,900	4060	Fuel & Oil - Groundworks	830
4025	Insurance	4,400	4070	Maintenance - LS08 WCP	550
4026	Photocopy Hire / Charges (see 4023)	0	4071	Maintenance - Tractor	1,100
4027	Computer Software & IT	1,500	4072	Maintenance - Ride on Mower	500
4030	Recruitment Advertising	0			
4036	Property Maintenance	400			
4156	Audit Fees - External	1,000		OverHead Expenditure	66,690
4157	Audit Fees - Internal	900			
4158	Accountancy Fees	870	1061	Agency Income - HCC Mtce	0
4963	PCSO	28,500	1062	Agency Income - TRDC Mtce	0
	New Village Centre	2,500	1080	Miscellaneous Income	0
	Balancing figure	0			
	Tfr from Reserves (if required)	-8,000			
	Tfr from Reserves re 4019 Peninsular				
				Total Income	0
			103	Net Expenditure	66,690

OverHead Expenditure

121,617

107**Grants (incl S137)**

1076	Precept	257,978	4200	Chairman's Charity Expenditure	3,000
1080	Miscellaneous Income	12,579	4711	S137 Grants	3,000
				Community Hall Membership Grant	7,100
1090	Interest Received	30			
				OverHead Expenditure	13,100
	Total Income	270,587			
			1077	Grants Received	0
101	Net Expenditure	-148,970	1200	Chairmans Charity Income	3,000

102 Local Democracy

					Total Income	3,000
					Net Expenditure	10,100
4024	Subscriptions/Publications	7,400				
4033	Parish Pump Newsletter	3,400	150	<u>Community/Village Hall</u>		
4201	Chairman's Allowance	500				
4251	Election Expenses	1,250	4036	External Decoration	0	
4300	Events - Revels on the Green	350	4036	Flood Prevention work	0	
				Transfer from reserves		
	OverHead Expenditure	12,900				
1031	Map Income	0		OverHead Expenditure	0	
1051	Advertising Income	1,600				
					Total Income	0
	Total Income	1,600	150	Net Expenditure	0	
102	Net Expenditure	11,300				

199 F & A Capital & Projects	Agreed Budget (£)	221 M S C	Budget (£)
4175 Sale of Assets	0	4042 Equipment Maintenance	1,000
4823 Tfr to Vehicle Repl Fund	4,000	OverHead Expenditure	1,000
4824 Tfr to Equipt Repl Fund	3,000	221 Net Expenditure	1,000
Depot Extension (Phase 1 - Plans)	3,000		
Tfr from Reserves (Depot Extension Plans)	-3,000		
OverHead Expenditure	7,000	299 E & A Capital & Projects	
199 Net Expenditure	7,000	4932 War Memorial Updating	200
		4937 Development of Play Areas	7,000
		4938 Brown Bin Caddy Liners	180
Finance & Admin.	- Expenditure 221,307	Stop Parking on Green Initiative	2,500
	- Income 275,187	Canal Adoption Scheme/Towing Path works	1,500
		Plaques on oak trees/Metasequoia	2,250
Net Expenditure	-53,880	Queens Diamond Jubilee tree	0
		Local Producers Market	250
Environment & Amenity		Transfer from Reserves (if required)	0
		OverHead Expenditure	13,880
202 The Green		299 Net Expenditure	13,880
4042 Equipment Maintenance	0		
OverHead Expenditure	0	Environment & Amenity	- Expenditure 44,280
			- Income 400
202 Net Expenditure	0	Net Expenditure	43,880
		Planning & Development	
203 Open Spaces & Trees		301 Roads & Street Furniture	
4048 Plants. Shrubs & Trees - General	1,000	4042 Equipment Maintenance	0
4049 Dog Hygiene	10,000	4043 Salt Bins/Salt	500
4699 Stones Orchard Fund - Hedging	3,000	4047 Footpath Maintenance	1,000
- Projects	1,000	4050 Bus Shelters	100
Transfer from Reserves	-3,000	4056 Street Trees	0
OverHead Expenditure	12,000	CMS Grant for Footpath Maint.	-1,000
		OverHead Expenditure	600
1077 Grants Received	0	301 Net Expenditure	600
Total Income	0		
203 Net Expenditure	12,000	302 Community Bus	
		4702 Community Bus	6,900
211 Events		OverHead Expenditure	6,900
4601 Garden Competition	0		
4602 Quiz Night	50	302 Net Expenditure	6,900
4605 Christmas Lights	8,500		
4608 Library Xmas Tree (Internal)	0	399 P & D Capital & Projects	
4609 Craft Workshop Day	0	Village Plan Development	2,000
4610 Fireworks on Green	4,500	Carbon Footprint Reduction	0
4611 Senior Citizens Seaside/Outing	1,200	Cycle Hire Project	500
4615 Library Xmas Tree (External)	500	OverHead Expenditure	2,500
4616 Picnic in the Park	0		
4617 Wassail	250	399 Net Expenditure	2,500
4618 Dog Show	250		
Local Travel Map	1,000	Planning & Development	- Expenditure 10,000
Bird Boxes	150		- Income 0
Ponds	1,000	Net Expenditure	10,000
OverHead Expenditure	17,400		
1080 Miscellaneous Income	0		
1082 Brown Bin Caddy Liners	400	Total Budget Expenditure	275,587
Total Income	400	Total Income	275,587
211 Net Expenditure	17,000	Net Expenditure	0

Annual Reports

Annual Parish Meeting Thursday 24 April 2014 Chairman's Report

I believe that Croxley Green is a very special place to Live, work and play. Why do I say that? Well it is down to the many organisations and people who make things happen. The Parish council support many of these organisations through mainly one off help on projects and also organise events and provide services to improve our village and community.

What we do.

- PCSO's to help keep a feeling of security;
 - Community Bus for the elderly, I have been told that it is the often the highlight of the week for many;
 - Annual seaside trip for the elderly;
- Put money into the improvement of the Baldwins lane playground, and will add more equipment next year.

Things do not always work out, we tried to set up a market, but was let down by stallholders who pulled out at late notice. The Artichoke said they wanted to do it, but that did not happen but we put a lot of work into this and still not managed it. We will not give up!!

Maintenance

Last year we struggled to keep up the maintenance as one of the rangers had left. So we supplemented the work by using a contractor. However, we recruited a new Senior Ranger, Philip Hinton, who started at the beginning of February. I do hope you can see the difference. We maintain the Green, stones orchard, footpaths and have an agreement with Canals and Rivers Trust to help improve the towpath, plus other areas.

We also work with Flowers of Croxley, and this brings a lot of colour into the village, and many thanks to them.

Events

- Dog show, the fun was had by so many and I was doing a little judging last year. Pity I do not know anything about dogs (!), so I had to choose which one I would like best to take home. I took home 5!!

- Fireworks
 - Wassail
 - The Revels
 - Croxfest
 - Quiz at the Sportsman
- New Christmas tree at the Library.

These are all things that are free to join in with, and are open for all. These are the things that contribute towards Croxley Green being a community rather than just a dormitory village.

Grants

Last year we gave grants to local organisations - Croxley Green Mummers (up to £500), Croxley Green Guild of Sport (£3,750 for kitchen upgrade), Croxley Green Residents Association (£500 for CGRA history project). I will discuss the budget in the F&A report.

Issues that affect us

Croxley Rail Link

- Largest project to affect us for many years;
- Work to start this year, and complete in 2017;
- We have liaised with the team to try to ensure we get a reasonable looking viaduct; We will keep in contact with them to help ensure disruption is kept as low as possible, but there will be some.

York Road School

Paul O'Rielly has restored the old building, and well done to him and also to the Croxley Green Residents Association who saved the building from being demolished.

Community, Neighbourhood and Village Centre Plan.

- Cllr Jordan will talk about the

progress, but one big step was the consultation and approval by Three Rivers District Council that we can go ahead with a neighbourhood plan for the whole of Croxley Green;

- The Village Centre Project will form part of that. This is still in the thinking stage. The Community Association has been doing very well, and they are considering what they want for the future. This will build into the plans, and we will see whether or not a medical centre will be part of this. No decision yet;

- We will probably follow the format of the Chalfont St Peter Neighbourhood Plan;

- I have researched to see if there may be some funding to help us to the next stage;

- It is so important that we get this done, as it gives us more control over what happens in Croxley Green and also ensures that a %, I believe 35, comes to Croxley Green from development premium;

Any help on this will be useful, so if you want to please contact us.

Church bells

The bells are ringing again, although not at night. It is great that the fundraising for them went so well, so well done to All Saints'.

Sport

After the issue last year, we are glad to see the Croxley Green FC youth have a home here, i.e. in Croxley and they use the Community canteen for events. Hopefully a line can be drawn in the sand and things can move on, with rugby also in the village.

Planning issues

Big concern over the Inspector's report concerning the TRDC allocations plan, and we lodged a letter of objection to the findings, after advice from CPRE, (Council for the Protection of Rural England).

Monies raised for charities so far totals about £1,800 for the Stroke

Annual Reports

Club, Croxley Green and Linda Jackson Macmillan Centre, Mount Vernon.

Boundary changes - The Local Government Boundary Commission has carried out a review.

They have recommended that Croxley Green has two wards, one called Dickinson in the South and West and the other Durrants for the North East of the village

I do believe all of these things are so important to keep Croxley a vibrant and fun place to live.

Thanks to our Clerk, Admin Officer, the Rangers, the PCSO's. Also great thanks to the Councillors for their time in attending meetings and making the decisions etc. Please remember they are volunteers, and we do not get any allowances for our time. Also, a great thanks to all the volunteers to who directly help us deliver our services, and to all of you who do something to help Croxley Green.

Cllrs Jordan and Edmunds will present their reports for the P&D and E&A committees.

You can see that the Parish Council supports many organisations and acts as a catalyst for the benefit of the people of Croxley Green. We also:

- Provide extra services;
 - Support events;
- Maintain the village to a high standard.

By doing this and working together with others, we help keep Croxley Green a wonderful place to live, work and play.

Thank you.

Cllr Chris Mitchell, Chairman

Environment & Amenities Committee Report

Looking at Cllr Seeley's report for last year it seems that some of the issues are still very much with us. She mentions the proposed development at the bottom of Baldwins Lane and that has not

gone away, indeed it is now even more pressing and also threatens erosion of our Green Belt.

Your Parish Council is still in discussion with TRDC regarding taking over ownership of the Green and Stone's Orchard. Matters are proceeding very slowly but we will continue to work on this and we now have a "Land Acquisition" group headed by Cllr Nik Bennett. It is hoped that discussions will recommence after the forthcoming elections and that the PC will be able to take ownership of our Green and Orchard. On the subject of Stone's Orchard I hope that you will agree it is looking particularly good at the moment. This is (perhaps) partly due to another successful and well attended Wassail in January and definitely to the work put in by our two Rangers. I am delighted to welcome this year, Philip Hinton as Senior Ranger and he has already made a noticeable and entirely positive impact on our local environment. Grateful thanks to Philip and Mark for the excellent job that they are doing. The Friends of Stone's Orchard (FOSO) is now firmly established and I am pleased to report that Cllr Leighton Dann is Chairman of FOSO and bringing his professional expertise to the Orchard. Last year there was an absolute profusion of wild flowers in the meadow area and it was gratifying to see the number of people, of all ages, enjoying the sights and sounds of Stone's Orchard.

You will be aware of the issues regarding the attack on our Green Belt. The situation is far from clear but I would encourage all of you who value the preservation of our Green Belt to make your thoughts and views known to your Parish Councillors, District Councillors and David Gauke our MP.

Soon work will start on the Croxley Rail Link and there is likely to be considerable disruption in terms of noise and traffic. The upside is that, hopefully, our local businesses will profit during the process. The new viaduct will certainly add

something to Croxley Green! I would like to thank the members of the E&A committee for their time and input this last year and also to pass thanks to Cllr Wendy Jordan, Chairman of the P&D committee for her assistance with E&A issues that have a planning aspect. Equally, thanks to Cllr Nik Bennett for his Chairmanship of the Land Acquisition Group as this initiative is an integral part of the E&A activity and one that we hope will be much greater when (if?) we obtain ownership. E&A meetings are open to the public and I encourage you come along and speak on any agenda item that interests and/or concerns you. Will really do like to hear your views.

Cllr Dudley Edmunds, Chairman of the Environment and Amenities Committee

Planning & Development Committee Report

During the 2013-14 municipal year the P&D committee met 23 times and looked at approximately 150 applications. It considered a wide variety of applications for planning improvements on houses and businesses as well as commenting on key policy developments for the district and county. The latter involved issues such as development on the green belt and the allocation of school sites. In addition, the team from the Croxley Rail Link came to brief members of the Parish Council on the applications for planning which were about to be submitted and to outline the schedule of work in the village and the organisations affected by the siting of the viaduct and the traffic issues.

Over the past two years CGPC and the CGRA have been working on developing a community plan. The plan is jointly owned by the Parish Council and Croxley Green Residents' Association and following the publication of the survey results there has been a period of analysis and reflection.

(.....cont'd on page 13)

[illegible]

Annual General Meeting of Council - 8 May 2014

At the Annual General Meeting of Council that was held on Thursday 8 May, Cllr Chris Mitchell was re-elected as Chairman of the Council for the year 2014 - 2015. Cllr Wendy Shafe was re-elected as Vice Chairman.

The Council Committees for 2014 - 2015 and membership are as follows:

Cllr Wendy Jordan, Chairman
Cllr Nik Bennett, Vice-Chairman
Cllr Kenneth Baldwin
Cllr Peter Getkahn
Cllr Julie Isard-Brown
Cllr Janet Martin
Cllr David Wynne-Jones

Cllr Dudley Edmunds, Chairman
Cllr Hazel Seeley, Vice– Chairman
Cllr Nik Bennett
Cllr Leighton Dann
Cllr Antony Vane

Cllr Chris Mitchell
Cllr Wendy Shafe
Cllr Wendy Jordan
Cllr Nik Bennett
Cllr Dudley Edmunds
Cllr Hazel Seeley

Contact details for the Councillors are shown on the front page.

www.threerivers.directory
The new online directory for the Three Rivers District

GET YOUR BUSINESS LISTED FOR FREE

There were several hundred written responses to the 'white box' questions and these needed to be categorised and edited and this is a detailed task. Suggestions for improvements included a swimming pool, coffee shops, better public transport, and indoor play area, a bank, longer library opening hours, provision for the elderly, mother and baby drop-in, a youth club, snow clearing on pavements and more adult education.

The data has already been used to support the Land Acquisition Group, which is in discussion with TRDC about transferring the ownership of the Green and Stone's Orchard. My thanks to Cllr Nik Bennett for leading on this. Last year you saw a presentation on the possibility of developing a village centre and Cllr Chris Mitchell is continuing to lead on this. Elements from all these initiatives have brought together a number of individuals and organisations dedicated to improving Croxley Green and making sure services are delivered to the benefit of all those who live here.

In January TRDC accepted the Parish Council's application for the designation of a Neighbourhood Plan area, which is for the whole Parish boundary. A Neighbourhood Plan is a major task and must be aligned to district and national planning policies and structures. This is the major project for the forthcoming year.

A number of planning issues impact on the Environment and Amenity Committee and I am grateful to Cllr Dudley Edmunds, Chair of E&A, for his input and assistance on issues such as the green belt and Croxley Rail Link. My thanks go to all the Councillors who sit on P&D and their diligence

in considering all the issues which come before us, especially Cllr Bennett as Vice-Chair. My thanks also go to the Clerk and the Administrative Officer for their help throughout the year.

*Cllr Wendy Jordan
Chairman of the Planning and Development Committee*

Finance & Administration Committee Report

I can advise that for the year ending 31 March 2014 our income was £266,000 and expenditure is £229,000. There is a surplus of about £37,000. This is mainly due to the lack of a second Ranger during last year, but also due to a few other savings and unspent items. This will go towards the overall general reserves that we should have anyway. However, we are using some of these reserves, around £8,000 if needed for next year's budget.

The budget for next year is projected to be £275,000.

Budgets have been tight, and there is a grant that we get that is reducing that comes via Three Rivers District Council from central Government. We decided that we did not want to cut services, so have a small increase. It works at an average of £1.10 per year per household.

There are some risks, one being a charge from Three Rivers District Council for election costs from 3 years ago. This being £13,887.10. We had allowed for some of this but not that much. So there is a discussion to be had.

In general we are on track and not overspent, but the years ahead could get very tight.

*Cllr Chris Mitchell
Chairman of the Finance and Administration Committee*

Three Rivers District Council Election - 14 May 2014

Following the Three Rivers District Council elections held on 14 May, three Parish Councillors, Cllr Phil Brading (Dickinsons Ward), Cllr Peter Getkahn (Dickinsons Ward) and Cllr Wendy Jordan (Dickinsons Ward) were elected to Three Rivers District Council.

For Durrants Ward Cllr Steve Drury, Cllr Chris Lloyd and Cllr Alison Wall were elected.

The two new Croxley Green Wards of Dickinsons and Durrants does not take effect yet for Parish Councillors who remain in the old three wards arrangement until Parish Council elections in May 2015. The Parish Council is made up of 16 Councillors in all, so in May 2015 there will be eight Parish Councillors from each of the two new wards.

Dog Fouling and Anti-social behaviour

The Parish Council often gets complaints about dog owners who allow their dogs to foul footpaths and open areas.

The Parish Council provides free dog waste bags and also supplies the library.

It is an offence to allow dogs to foul public places and owners can be fined.

The Council has asked the Police Community Support Officers, who have the power to issue fine tickets, to be on the look out for those inconsiderate owners who allow their dogs to foul the pavements.

**PLEASE DON'T
ALLOW YOUR DOG TO
FOUL PUBLIC
PLACES!**

Croxley Alarm Systems Ltd



For all your Security Requirements
Free Advice and Quotations—Domestic and Commercial
Croxley's Only NACOSS Gold Approved Installer
Alarms + 24 Hour Monitoring + CCTV + Door Access

Tel: 01923 771920

Concorde House, 4 Soots Hill, Croxley Green, Herts, WD3 3AD
Email: info@croxleyalarmssystems.co.uk
Fax: 01923 772901 Mob: 07768 274750
www.croxleyalarmssystems.co.uk

Croxley Osteopathic Clinic

Deborah Osborne-Kirby, BSc (Hons) OST

Registered Osteopath

- Back & Neck Pain
- Muscle Spasms & Joint Pains
- Minor Sports Injuries
- Lumbago & Neuralgia
- Sciatica, Leg Pain
- Arthritic & Rheumatic Pains
- Expectant Mothers

133 New Road, Croxley Green, WD3 3EN
(opposite the Co-Op)

Tel: 01923 770284

www.croxleyosteopaths.co.uk



Ainsworth Farm Cattery

Bucks Hill (near Sarratt/Chipperfield)

Small, friendly, family run cat hotel, for those times when you are away. Loving care and attention given to all - cats!!

Tel 01923 264503, 07789 327152 or 01923 270730



Offering a friendly, professional and flexible service whatever your security needs.

Call now to arrange your free no obligation quotation and risk assessment.

0800 1979469

- Alarms
- Locks
- Access Control
- CCTV
- Maintenance Contracts
- Lighting

276 New Road, Rickmansworth, Herts, WD3 3HH

Tel. 01923 441117 Fax. 01923 441118

Email: sales@m25security.co.uk

A History of Croxley Green through its Street Names can now be viewed on the Parish Council website at:

http://www.croxleygreen-pc.gov.uk/cg/our_environment/croxley_by_street_names

Or click on 'Our Environment' then select 'Croxley by Street Names'

Parish Council Meetings - general public welcome



Meetings start at 8pm

Council meeting - last Thursday of each month
(except May and August)

Annual Parish Meeting - last Thursday in April

Annual General Meeting - second Thursday in May

Environment & Amenity meeting - first Tuesday of each month
(except May and August)

Planning & Development meeting - first and third Wednesday of each month

Finance & Administration meeting - second Thursday of each month
(except August)

EVENTS - dates for your diary

June

Friday, 6 June 2014— Draw for the Senior Citizen's day trip to Brighton

Saturday, 21 June 2014 1.30-5pm — Croxley Revels

Saturday, 28 June 2014—Croxley Great Barn Tour at 11am. Meet in the car park of St Joan of Arc School, Rickmansworth at 10.45am

July

Wednesday, 2 July 2014—Senior Citizen's day trip to Brighton

Saturday, 26 July 2014—Croxley Great Barn Tour at 11am. Meet in the car park of St Joan of Arc School, Rickmansworth at 10.45am

Aug

Wednesday, 6 August 2014 2pm until late — Classic Cars on The Green

Saturday, 30 August 2014—Croxley Great Barn Tour at 11am. Meet in the car park of St Joan of Arc School, Rickmansworth at 10.45am

Sept

Saturday, 6 September 2014 noon until 8pm — Croxfest

Sunday, 14 September 2014 10am until 5pm — Classic Cars on The Green and Carters Steam Fair

Saturday, 27 September 2014—Croxley Great Barn Tour at 11am. Meet in the car park of St Joan of Arc School, Rickmansworth at 10.45am

Oct

Saturday, 25 October 2014—Croxley Great Barn Tour at 11am. Meet in the car park of St Joan of Arc School, Rickmansworth at 10.45am

Nov

Sunday, 9 November 2014 — Remembrance Day



CROXLEY GREEN PARISH COUNCIL COMMUNITY BUS



DO YOU USE THIS SERVICE?

TO WATFORD TOWN CENTRE – EVERY FRIDAY

1ST JOURNEY

Winton Drive Approach
Shaftsbury Court
Malvern Way/Barton Way
Fuller Way/Barton Way
Hanover House
Sherborne Way/Baptist Church
Return from Watford

9.30am
9.32am
9.34am
9.36am
9.37am
9.40am
12 noon

2ND JOURNEY

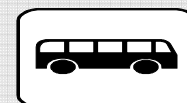
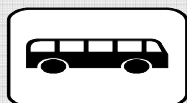
Sycamore Approach
Valley Walk (Green)
Valley Walk/Beechcroft Ave
Frankland Rd/Harvey Rd
Chalmers Court
All Saints Lane (outside church)
New Road
Return from Watford

10.00am
10.01am
10.03am
10.05am
10.08am
10.10am
10.12am
12.30pm

3RD JOURNEY

Junction Links Way & Warwick Way
Junction Links Way & Dover Way
Junction Links Way & Little Green Lane
Junction Little Green Lane & Durrants Drive
Junction Durrants Drive & Dover Way
Kenilworth Drive/Baldwins Lane Footpath
Manor Way
Grove Court
Return from Watford

10.30am
10.31am
10.32am
10.33am
10.34am
10.36am
10.38am
10.40am
1.15pm



FREE SERVICE

*For the exclusive use of Senior Citizens and
persons in sheltered accommodation.
You may be required to show proof of eligibility*



Coach Trip to Brighton

On Wednesday 2 July 2014, the Parish Council will be taking a group of senior citizens on a day trip to Brighton. This year, two coaches will leave Community Way car park at 9am and will arrive back at 7pm. This is expected to be a popular event and as seats are limited, places will be decided by means of a lucky draw. If you would like to enter the draw, please complete the form below with your details and the name of your guest and return the slip to the Parish Council by Monday, 23 June 2014, when the draw will take place.

To be eligible to attend you (and your guest) must be a resident of Croxley Green, a senior citizen and must be independently mobile. Good luck for the draw!!!!

✂ _____

Name

Address

.....

.....

.....

Telephone Number

Name of Guest

I would like to attend the day trip to Brighton on Wednesday, 2 July 2014 and I confirm that both my guest and I are residents of Croxley Green, senior citizens and are independently mobile.

Signed

The Parish Pump is published by Croxley Green Parish Council

'Keeping Croxley Special'

Telephone 01923 710250

E-mail: info@croxleygreen-pc.gov.uk

www.croxleygreen-pc.gov.uk