

Published by:
Croxley Green
Parish Council

The Parish Pump

No 17 - May 2000

* * * * *

EDITORIAL

One of the most difficult tasks that an editor faces is in knowing how to set out a newsletter. Leslie now does most of this, leaving me the task of checking the articles and leaving the front page for me to complete with an introductory Editorial and find room for the Chairman's Letter.

As can be seen from this edition, our Chairman has become prolific in writing about his many interests and is very good at encapsulating the work of the Parish Council which leaves me little to say and even less room to say it in. So, I have little to say for this edition.

Our councillors are all very keen and, having learned the ropes, we have achieved something of worth since we were all elected. Inevitably some councillors find that they can no longer spare the time and so we currently have two vacancies. That left by Margaret Pomfret, who is a great loss to the Council, will be filled shortly by co-option, there being no call for an election. The other will be filled shortly.

I'll sign off now and wish you -

Happy reading.

John Hedges - Editor.

FROM THE CHAIRMAN

Nature is a wondrous part of our world. Spring comes with its regeneration effect to start a new year and season. Before the spring blossoms emerge, nature prepares its prodigy through the Winter months for the future year.

Likewise, through the winter months Parish Councillors have been preparing to assist in establishing forthcoming events and to appraise new projects for the year 2000. To select but a few, an early start has been made on the preparations for this year's Garden Competition, our participation in The Revels, The Funday on The Green and the Craft Fair. We are looking at certain parts of our street furniture, such as bus shelters and floral displays in some of the shopping areas.

With a growing community, it is important to assess the needs of the new families, without imposing pressure, so that they are aware of the

many social and cultural activities that lie within the community.

The Community can also benefit from new ideas, especially if they can enhance established customs and social activities. With the ever increasing economic pressure being brought to bear from outside upon the village, we must be vigilant as too many changes can cause irreversible damage. We have already, before the latest action, experienced the consequences of losing the facilities of any Banking services. It is noted with interest the effects of such action has upon the shops and businesses. We have already lost too many shops and the closing of any more will have detrimental effects upon the economy of the village making it difficult for those residents that do not have their own transport to shop. Also the status of the village is reduced to becoming a suburb of a larger community.

The Council are very aware of the condition of Croxley Green roads although we have no direct responsibility towards their maintenance we can, with the residents' support, bring notice to the Highway authorities of the priorities now required within the village to keep our roads and footpaths in a safe condition.

Rural footpaths are maintained by the Parish Council, keeping the tracks clear and renewing the numerous signposts. Suggested walks are available from the Parish Office in encapsulated diagrams. There is no better way of exploring our own surrounding countryside, from the canal-side at Common Moor to the Chess valley and back to the Village green. But for the more adventurous there are no bounds, via the paths to adjacent villages.

For those of a more athletic nature the Village has many precious open spaces which we must retain, to allow all age groups to participate in their given sport.

The Skate Park now has its new fence to assist in the proper management of the facility. The management of the Park has now been endorsed by a proactive users' group committee, allowing ideas and comments for its well-running to be aired by representatives from different quarters of the community.

I hope a few, of the many benefits outlined in this draft, makes us more aware of the precious facilities that lie within our midst. So, it is up to all of us to make sure that we are able caretakers and pass on to our future generations the essence of Rural Life and the true spirit of a community.

Brian Norman - Chairman

Contributions or requests for advertising space will be gratefully received by:-
Lesley Sanders - the Parish Office
01923 710250 (10.00 am - 2.00 pm)
Copy Date:- 27th October 2000

COUNCILLORS

North Ward

John Hedges 222715

**Chairman - Planning
& Development**

Geoffrey Langford 341228

Brian Norman 779331

Chairman - Council

Hazel Seeley 772696

Joe Ekanayake 442210

Croxley Green Ward

Gabriel Gallet 771098

Jackie Hughes 443360

Christine Jefford 771769

**Chairman - Environment
& Amenity**

Adrian Simpson 720041

A N Other

A N Other

South Ward

Tim Davis 772918

Vice-Chairman - Council

Jackie Marshall 770336

Judith Turnbull 772798

Cliff Vassiliou 779927

David Wynne-Jones 251905

Clerk to the Council
Derek Fineberg 710250

The Council Offices
Community Way
Croxley Green
Rickmansworth
Herts WD3 3SU

Croxley Green Parish Council • Founded 1986



NCT

Did you know that twice a week, the number of pregnant couples in Croxley Green increases quite dramatically? That's because there are currently two members of The National Childbirth Trust who are trained antenatal teachers, and who each run classes to help prepare pregnant women and their partners for the birth of their baby and for early parenthood. Classes take place during evenings and weekends, at times when both mothers and fathers can attend. They are heavily over subscribed, particularly since Watford General Hospital recently stopped running classes at these times.

As well as providing antenatal classes, members of the local branch of the charity provide information and support to all pregnant couples, aiming to give every parent the chance to make informed choices. In Croxley Green we have two postnatal supporters, who offer friendship and a chance to meet other new mothers through coffee mornings and get-togethers. Another of our members, a Croxley resident

and former Chair of The Watford Branch, organises table-top sales where baby goods, clothes and equipment can be purchased second-hand at reasonable prices. Proceeds from this, and other fundraising and social events, go to further the work of the charity, including funding our national help-line which deals with 6000 queries a month, and including training new local antenatal teachers and breastfeeding counsellors.

After several years of running antenatal courses and doing additional voluntary work, it seems that both our antenatal teachers may have to leave Croxley this summer, and our breastfeeding counsellor, also a long-term resident of Croxley until very recently, may have to give up her voluntary work. On behalf of the Watford & District branch, I should like to thank Carol, Jacqui and Sarah for all their efforts. Anyone wanting to obtain further information about our charity should contact our national enquiry line (0208 992 8637) or myself on 01923 337294.

Kay Fearn
Watford & District Branch Treasurer

This charity is the largest and best-known of its kind in Europe, but depends on the financial support and goodwill of companies, charitable trusts, individual supporters and statutory funders.

CROXLEY GREEN ALLOTMENTS

To be at one with Nature and to see produce emanate with a little nurturing by oneself or family help gives one a great sense of achievement. In Croxley Green we are blessed with many Allotment sites that allow residents the opportunity of growing their own soft fruit and vegetables. The image of just a retired male society has long since gone. Many of the allotment plots are managed by families of all ages, adding a pleasing social aspect to few hours on the plot.

It is never too late to take up the challenge with Nature, not forgetting that the exercise can only be of a benefit to our much under used muscles.

Many existing members are more than happy to assist in showing new members the ropes and even, when

the season is right, to share some of their young plants and, hopefully, in exchange for your own.

A well planned planting regime can offer fresh vegetables for most weeks of the year, also it allows for a greater variation in the types of vegetables and salad crops that one can obtain.

Croxley has certain variations in soil, which shows itself in the larger allotment sites, encompassing clay, chalk and gravel, but with the additional help of a little natural humus one can grow most types of vegetables, soft fruit and salad crops.

The longer lighter evenings present an opportunity to relax and render that much reviled modern complaint "Stress" to the nether regions, by spending some quality time on the allotment plot.

So come and join us, and if you need seeds and equipment we commend membership of Croxley Green Horticultural Society, who have the Horticulture Hut adjacent to the Barton Way Allotments.



Lacemakers

Are you interested in meeting fellow lacemakers in social surroundings?

We meet on Thursday evenings in

Croxley Green Library,
Barton Way

from 7.30pm – 9.30pm

£2.00 per person per evening.

All abilities welcome – we lend equipment for beginners to "have a try" so please telephone Elaine Norman on 01923 779331 before coming. We occasionally invite suppliers to bring their wares. Looking forward to meeting some of you.

Croxley Green Parish Council – Invites you to come and have

FUN ON THE GREEN

Sunday 16 July 2000

Informal Games
from 2.00 to 5.00pm



A Picnic
(bring your own food)

Try the Circular Parish
Footpath Walk
(starts and finishes on The Green)



Just Enjoy and Relax

CROXLEY TENNIS CLUB

Croxley Tennis Club is located just off "The Green", through the Croxley Guild gates opposite to The Artichoke public house. We are a friendly social tennis club, made up of people, with new members always welcome. The club comprises five all weather courts, (three floodlit) and a small timber pavilion, that are available to its members throughout the year. The membership is currently in excess of 200 and has a broad age mix (5-80ish, not wishing to give anyone's secrets away), which we think adds to the friendly character of our club. The standard of tennis played is equally varied and all are catered for from beginners to those accomplished enough to be selected for the Club teams. The teams compete in leagues (ladies/mens/mixed/veterans) against other local clubs throughout the summer.



SOCIAL The club has several social sessions each week, that are designed to encourage like-minded individuals to turn up at set times to enjoy a game without the need to make prior arrangements, as are the monthly and Bank Holiday mixed American style tournaments. In addition to the tennis, there are a number of social events arranged each year, from dances to a garden party and our stall is ever present at the Croxley Revels.

JUNIORS The club has a growing junior section (over 100 members – ages 5 to 17). All ages and abilities are catered for by the coaching programme run by PDCS which includes fun "Pay and Play" sessions on Saturday afternoons and "Squad training" during the week concentrating more on technique and tactics. Individual coaching is available on request (for the seniors too). In addition, the club runs a monthly junior tournament and junior social play is supervised on Friday evenings. We have recently entered teams in the National and County Junior Leagues and our junior development programme has just been awarded a leisure grant from Three Rivers District County to continue our growth and make links with the local schools (well done to all our junior players).



Play Tennis
Weekend
6th & 7th May



This nationally sponsored event, supported by Croxley Tennis club, is to encourage the playing of tennis.

There is no charge and everyone is welcome, although to structure the day, adults are invited to join in the Social play on Saturday morning (10.00am to 1.00pm) and juniors (age 5 to 17) are invited to the tennis fun afternoon (1.30pm to 5.30pm) to include games and competitions) which will be run and assisted by Paul Dent Coaching Services (parents welcome to watch and refreshments will be available).

Sunday from 10.00am onwards the courts are available for Social play for all ages and families are welcome.

A barbecue and refreshments will be available on both days (barbecue from 1.00pm).

The weekend is being sponsored by the Lawn Tennis Association, Head Racquets, and Maureen James and Associates Estate Agents.

FoxCrott **Soft Furnishings**

Made to Measure Curtains & Blinds

Free Advice & Measuring Service

City & Guilds Quality

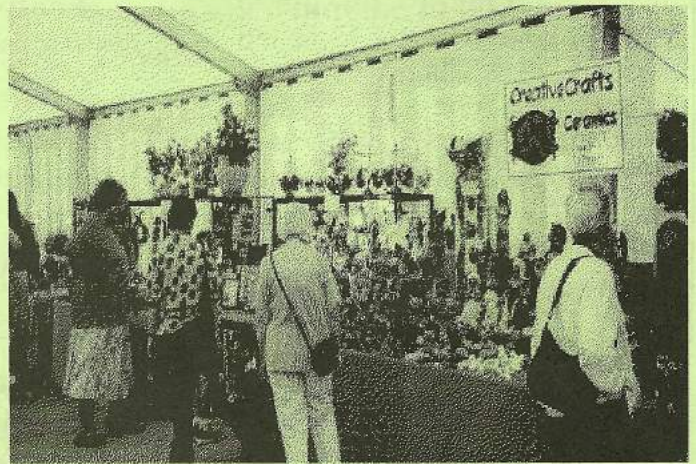
01923 773846

Our Great Community Event

COME AND EXHIBIT, PERFORM, HELP OR JUST VISIT

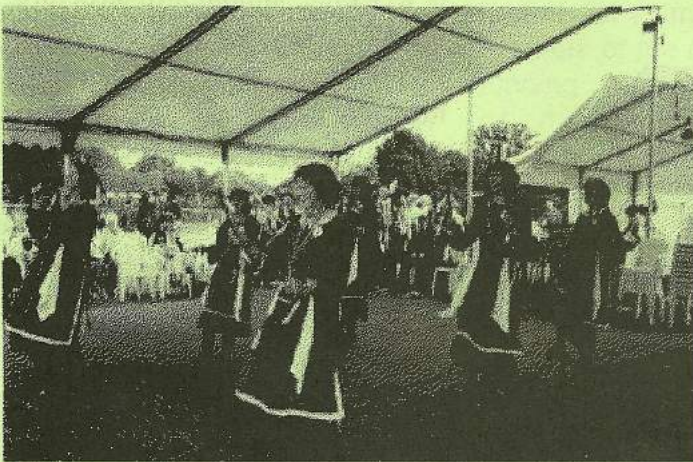
**Creative Crafts
with their
colourful
ceramics display**

Picture right:



**Whitethorn Morris
One of
the many
Arena Events**

Picture left:



Now with the lighter evenings opportunities arise to either cultivate those prize blooms or retreat to the workshop to engross oneself in an all consuming hobby whether it be woodturning or pottery.

Even though many crafts or hobbies can be carried out through the winter months, Spring adds a necessary ingredient in the form of motivation to either finish a winter project or to start a new craft. From wood turning to the great varieties of the needle skills are all important components to a successful craft fair.

Many of the crafts that have already been displayed in our previous fairs, demonstrate the wealth of skills that are in the hands of many of our residents. So now is the time, for those of you that have already participated, to consider having a position in the Craft Marquee this year. Also we welcome any new crafts however obscure the art may be.

The home craft exhibits will be supported, as in previous years, with Professional Craft stalls, so that they give an insight on how small beginnings can develop into enjoyable pastimes with certain financial gains.

So whether you make quilts, tea cosies, or are handy in the sculpture of leather work, share your talent with the rest of the community and consider reserving a stall in the home Craft Marquee.

The Craft competition is to be judged at this year's Craft Fair 16/17 September 2000. It is hoped that this year's competition will be as well supported as last year's. The standard of work produced was exceptionally good, which proved difficult for the judges to come to a decision and, if people were disappointed about not winning, then please enter again this year. It is hoped that we will see more work from the under 16 age group. This proved disappointing as I am sure that we have many more talented needlecrafters in this age range. More details from the Parish Office near to the time.

Promote Your Business

PROGRAMME

FREE DISTRIBUTION
ESTIMATED 10,000 COPIES

ON SITE

PERIMETER ADVERTISING OVER TWO DAYS
A3 LAMINATED FLYER

BANNER

DISPLAYED AT
PROMINENT HIGHWAY LOCATIONS



Musicians
Groups
Vocalists

An Invitation to all amateur entertainers to take part in the arena events during the weekend

Enquiries welcome from individuals, local organisations, schools etc

Auditions may be necessary

Saturday/Sunday
16 & 17 September



Local Organisations/ Individuals

On both days marquee set aside exclusively

for your use

8ft x 8ft space

With 6ft table & power point

Art & Needlecraft



Water Colours

An opportunity to enter a Competition and exhibit your work

Acrylic

etc

Needlepoint

etc



Embroidery

Professional Crafts

Aluminium frame marquees

Cocomatting flooring

8ft x 8ft space

6ft table – Power point

Parking adjacent to site

Unlimited outside space

Reasonable Rates

Produce & Flower Show



SATURDAY
16 SEPTEMBER 2000

Tug of War Competition



Sponsored by
The Sportsman

Further details:
Jackie 01923 443360

Information, prices, applications forms regarding any of the above can be obtained from:

Derek Fineberg – Clerk
Parish Office Community Way
Croxley Green Herts WD3 3SU
Tel: 01923 710250
Office Hours: 10.00am to 2.00pm
Monday to Friday

EXHIBITORS
FUN FAIR
ENTERTAINERS
COMPETITIONS
PETS CORNER
FOOD/BAR
BARBECUE
SATURDAY NIGHT
LIVE ENTERTAINMENT



Croxley Needlecrafters

Croxley Needlecrafters was created in April 1998 to provide an informal, social environment for local needleworkers to get together and share their skills and knowledge with others. The first few meetings were held at home but gradually our numbers grew and we needed more space. We now meet regularly in "The Shed" at The Sportsman on the first Tuesday of the month at 8p.m. and the third Tuesday of the month at 10.30a.m.

Needlework can be a rather lonely pastime often worked in the evenings in front of the television but we were sure that there were stitchers, like

ourselves, who would like to try new techniques but haven't the confidence to get started, or who had got

stuck on a particular project and didn't know what to do next. There are also those who would love to stitch but never seem to have the time to get round to it. The Needlecrafters meetings mean a couple of hours of uninterrupted stitching with no distractions. We are aware that many people do not like to go out in the evenings so we run a morning group where babies and toddlers are also welcome.

We invite guest speakers along to some of our meetings. Guests so far have included a member of Berkhamsted Quilters, a textile conservator from the Museum of London, a member of the Guild of Needlelaces and a bobbin lacemaker. Members of the group receive regular

newsletters giving information not only about what's happening within the group but also news of national events in the stitching world. We are also fortunate to receive discounts on our fabrics, threads, patterns, etc. from Crossover Crafts, a local needlework shop.

It really doesn't matter what type of needlework you do, how long you've been doing it or how good you are – all stitchers are welcome, so come along to the meetings or see us at this year's Craft Fair where we will have a display of our work and will be demonstrating stitching techniques.

If you would like to know more about the Croxley Needlecrafters please come along to one of our meetings or contact Stella on 01923 442637.

CHANGES IN COMMUNICATION TECHNOLOGY

The modern types of communication technology now surround us in many forms. From the home computer, with its Web Site, to the all encompassing mobile phone but, within the last Century, Croxley and the surrounding towns were at the heart of supplying one of the basic materials in the print industry "Paper". From the early nineteenth century Croxley was and is now situated on one of the country's main means of communication, the Grand Junction Canal.

This waterway artery was the main feeder from the London docks and the industrial North of basic materials in the manufacture of paper. Whether it was coal for the mill boiler or the raw materials for the paper production, all was transported by the many fleets of Working Narrow boats. Within the last 50 years a complete contrast has happened to this once all important means of transport. The last of the working narrow boats ceased commercial work with the closure of the Lime juice works at Hemel Hempstead. The canal is now only used as a leisure facility but it is a constant reminder of

the industrial eras in which Croxley played a major part.

Around the canal system within the Croxley/Rickmansworth/Hemel Hempstead area there are a few archaeological reminders that show the importance of the canal as a means of transportation before the rail and road system caused its demise. At Rickmansworth there was Walker's Boat Yard where many wooden narrow boats were constructed. Likewise, there is evidence of the many loading quays or docks that were used to unload materials for the once numerous businesses along the canal system.

Some of the older buildings adjacent to the canal still show evidence of the era when the horse was the main power in

drawing the narrow boats. Upon careful inspection of the older building at Batchworth one can still detect the all important stables.

The Rickmansworth local festival allows us a snap-shot into the past of the commercial narrow boats that once plied this canal system. Also some of the non motorised boats, known as butty narrow boats, display the living quarters in which a whole family were accommodated.

So even with all the major communications technology advances that are occurring, one must not lose sight that in our yesteryears, paper was an all important media in business and personal communication.

CLlr Brian Norman

YOGA CLASSES

Yoga for fitness, flexibility, relaxation and stress management.

Beneficial for many common ailments.

Free the body ~ free the mind ~ free the spirit

The Yoga Network runs the following classes in Croxley Green.

All ages and abilities welcome.

Mon 7.45 - 9.15pm

YOGA FOR MEN

YOGA FOR ALL

Tues 7.45 - 9.15pm

Wed 9.45 - 11.15am

Wed 7.45 - 9.15pm

Fri 10.30am - 12.00

Contact the Yoga Network for more information or to book a place.

Tel: Geraldine on 01923 775367 or Andrea on 01643 704305

Website: www.yogauk.com/yoga.network Email: yoga.network@yogauk.com

TREES IN OUR STREETS



Croxley Green Village is one of many communities that benefits from the neighbouring open spaces of the Chiltern Hills, that allows its residents the opportunities of appreciating the many aspects of Country Life. That does not preclude the objectives of retaining within the Village certain rural features such as green open spaces and, where possible, trees. It was gratifying to receive a request from part of the Croxley Green neighbourhood, to investigate the practical aspect of planting trees in the kerb-side verge as an added feature to the road.

As a Parish Council we were pleased to respond to such a request, and after the necessary preliminaries were carried out the trees were duly planted. With the ageing infrastructure of our roads it is important that we try to retain some pride in keeping our roadsides pleasing to the eye.

Other trees have been planted throughout the village in compliance with the requests of individual householders.

So to further the cause of bringing a more rural feel to our Village scape we would like to encourage, those of you who wish to have a tree outside your property, with the understanding that it is firstly practical to do so, and secondly that it may require a little care and attention from your good selves in its early years, in the matter of watering.

We are aware that low maintenance and non-fruit bearing trees would be the most practical types to be planted. Notwithstanding, we have many roadside trees that are now showing the sad effects of age, if and when they have to be removed it would be sad if that vacant space is not rejuvenated with another flowering tree.

Should you wish to make a request, please contact the Parish Office so that any necessary investigating can be carried out.

Cllr Brian Norman

CAR BOOT SALE

MALVERN WAY SCHOOL
CROXLEY GREEN

SATURDAY MAY 20TH - 10AM - 1PM

£6 PER CAR IN ADVANCE, £7.50 ON THE DAY

RING 01923 337294 TO BOOK A STALL
PLEASE - NO TRADERS

**Refreshments, home baked cakes, games and activities
available with proceeds in aid of playground appeal.
Entrance 50p per adult**

CROXLEY ALARM SYSTEMS

**ALARMS ★ LOCKS ★ CCTV
DOOR ENTRY SYSTEMS**

**FREE ADVICE AND QUOTATIONS FOR ALL
YOUR SECURITY REQUIREMENTS
DOMESTIC OR COMMERCIAL
YOUR LOCAL
NACOSS APPROVED INSTALLER**

**204a NEW ROAD CROXLEY GREEN HERTS WD3 3HH
Phone 01923 771920 - Fax 01923 772901 - Mobile 0468 274750**

MILLENNIUM 2000



Spring at long last seems to be on the way as the local parks and gardens all have colourful displays of daffodils, crocus and hyacinths etc, not forgetting the flowering shrubs and trees which are a mass of bloom – lets hope that there are no late frosts to spoil them!

Perhaps this is also a good time for some forward planning – the Parish Council will be holding their annual Garden Competition again this year –

you will find an appropriate entry form below.

We would like to have a bumper number of entries for the Millennium year, we know there are many lovely gardens in Croxley Green, both large and small, similarly there must be some - even better ones - just waiting to be discovered!

Judging does not start until July with the final judging on 29 July 2000. I must admit, it is a great

privilege to both view and judge the gardens, but more so a pleasure to meet all the garden enthusiasts who join in the fun of the competition – we do hope we will have the pleasure of viewing many more gardens in Y2K. The competition is of course open to all residents in the Croxley Green Parish.

Cllr Christine Jefford
Environment & Amenity Committee



HAPPY GARDENING AND GOOD LUCK TO YOU ALL.



GARDEN COMPETITION 2000

ENTRY FORM

Mr/Mrs/Miss	_____	First Name	_____
Surname	_____		
Company (if applicable)	_____		
Address	_____		

	_____	Post Code	_____
Telephone No:	_____	Signature	_____

Categories – Please tick ✓ where appropriate

HOUSEHOLD SECTION

Front Garden

☐

Back Garden (less than 60' x 30')

☐

Back Garden (more than 60' x 30')

☐

BEST FLORAL DISPLAY FRONTING PUBLIC HIGHWAY

Public House

☐

Shops/Commercial Premises

☐

Completed entry forms to be returned no later than 14 July 2000
Derek Fineberg – Clerk to the Council - Croxley Green Parish Council